

Curriculum Vitae of Victoria Pease

1. PERSONAL DATA

Current position:

Professor, Tectonics & Magmatism

Dept. Geological Sciences, Stockholm University

Frescativ. 8c, SE-106 91 Stockholm, Sweden; Tel. +46 (8) 674-7321

email vicky.pease@geo.su.se; web page www.tmrq.geo.su.se

2. QUALIFICATIONS & EMPLOYMENT HISTORY

Qualifications:

- 2010 **Professor**, Tectonics & Magmatism, Stockholm University, Sweden
2003 **Associate Professor** (Docent) in Tectonics & Structural Geology, Stockholm University
1998 **Doctor of Philosophy** in Geology, University of Oxford, England
1991 **Master of Science** in Geology, San Jose State University, U.S.A.
1983 **Bachelor of Arts** in Earth Science & Environmental Studies (double degree) University of California (Santa Cruz), U.S.A.

Current position:

- 2010 *to present* **Professor** of Tectonics & Magmatism, Dept. of Geology & Geochemistry, Stockholm University,

Previous positions:

- 2004 - 2010 **Senior Researcher** in Lithosphere Evolution & Orogen Dynamics (2004-2010), Dept. of Geology & Geochemistry, Stockholm University, Sweden (funded by the Swedish Research Council).
2001 - 2004 **Assistant/Associate Professor**, Dept. Geology & Geochemistry, Stockholm University, Sweden (80% research, 20% teaching/administration)
2001 - 2002 **Research Fellow**, Dept. of Geophysics, Uppsala University, Sweden (80% research, 20% teaching/administration)
1999 - 2000 **EU Marie Curie Post-doctoral Fellow**, Dept. Geophysics, Uppsala University, Sweden (80% research, 20% teaching/administration)
1990 **Researcher** (6 months), Dept. of Geology, University of Oslo, Norway
1982 - 1989 **Paleomagnetic Laboratory Manager**, United States Geological Survey 345 Middlefield Road, Menlo Park, CA 94025, United States
1991 - 1994 **Leave**, Relocation to UK - American citizens required to pay taxes for 3 years to qualify for PhD student funding, thus a 3-year absence from geology.

3. OTHER QUALIFICATIONS AND ACHIEVEMENTS

Awards & invitations

- 2014 Invited Review Article (Tectonophysics)
2011 Invited Plenary Lecture, AAPG Polar Petroleum Potential
2008 Invited Expert (Arctic Tectonics), US Federal Government Task Force UNCLOS 76
2008 Invited Expert (Arctic Tectonics), International Ocean Drilling Program Workshop
2008 Lithos most cited paper for the years 2003-2007
1997 Individual EU Marie Curie Post-doctoral Fellowship
1996 Invited Scholar, La Trobe University, Melbourne, Australia
1990 Recipient of a Marshall Fund Research Grant, University Of Oslo, Norway
1998 Recipient of the M.J. Crittenden Scholarship, San Jose State University, U.S.A.

Host to guest researchers

- 2015 Mr. Naveed Anjum, University of Peshawar, Pakistan; 6 months PhD student visit
2014 Prof. J. Toro, University of West Virginia, xx months sabbatical
2014 Mr. C. Hoiland, PhD student, Stanford University, California, 4 month visit
2013 Prof. M.H. Shalaby, Nuclear Materials Authority, Egypt; 1 month sabbatical
2011 Dr. G. Jarrar, University of Jordan, Jordan; 1 month sabbatical
2011 Mr. K. Kadi, Saudi Geological Survey, Saudi Arabia; 2 month sabbatical

2010	Dr. N. Yaseen, University of Jordan, Jordan; 1 month sabbatical
2008	Dr. J. Scarrow, University of Granada, Spain; 4 month sabbatical
2007	Prof. M.H. Shalaby, Nuclear Materials Authority, Egypt; 3 month sabbatical
2006	Dr. W. Bohrsen, Central Washington University, USA; 1 month sabbatical

Post-doctoral supervision

2015-present	Dr. F. Robinson, Provenance of metamorphic rocks, Brooks Range, AK
2015-2016	Dr. X. Zhang, Provenance studies using QEMSCAN
2013-2015	Dr. W. Zhang, Neoproterozoic sediment provenance of the Timanian margin
2012-2013	Dr. I. Garcia Nobre-Silva, Pb-isotopes of the High Arctic Large Igneous Province
2011-2013	Dr. L. Baranek, Neoproterozoic to Early Paleozoic sediment provenance of Ellesmere Island
2009-2011	Dr. T. Thomsen, LA-ICPMS U-Pb geochronology
2008-2009	Dr. Chris Kirkland, Neoproterozoic sediment provenance of N. Greenland
2005-2007	Dr. G. Morris, X-Ray Fluorescence analytical method development

Doctoral examination committees

2013	Cairo University, Egypt. H. A. Khamis Ibrahim, "Structural and radiometric studies of the Precambrian rocks at Wadi Fatira El Zarqa, CED, Egypt".
2013	Gothenburg University, Sweden. V. vanSchijndel, "Precambrian crustal evolution of the Rehoboth province, Southern Africa".
2012	Oslo University, Norway. L. Augland, "Intercontinental interactions between Baltica and Laurentia".
2009	Gothenburg University, Sweden. K. Applequist, "Proterozoic Crustal Evolution in Southcentral Fennoscandia".
2007	Uppsala University, Sweden. F. Nilfouroushan, "Ground Movements in the Zagros Fold-Thrust Belt of SW Iran Measured by GPS and InSAR Compared to Physical Models"
2005	Stockholm University, Sweden. J. Vuorinen, "The Alnö alkaline and carbonatitic complex, east central Sweden – a petrogenetic study"
2004	Stockholm University, Sweden. H. Mattsson, "Volcanism at the tip of a propagating rift: the Heimaey volcanic centre, south Iceland"
2003	Lund University, Sweden. O. Paulsson, "U-Pb geochronology of tectonothermal events related to the Rodinia and Gondwana supercontinents – observations from Antarctica and Baltica"
2003	Uppsala University, Sweden. A. Bahroudi, "The effect of mechanical characteristics of basal decollement and basement structures on deformation of the Zagros Basin"
2003	Vrije University, Amsterdam. G. Murrell, "The thermal evolution of central Fennoscandia"
2002	Uppsala University, Sweden. K. Persson, "Deformation zones in Models and Nature"

Hires, promotions, and science review committees

2015	Promotion Committee, University of Stavanger, Norway
2014	Promotional panel, Cairo University, Egypt
2013 - 2015	Science Panel, Research Council of Norway
2013	External expert for hire of Isotope geochemist, Lund University
2012 - 2013	International Arctic Science Committee Geoscience Advisory Group
2012	Promotional panel, King Saud University, Saudi Arabia
2012	External expert, German Council of Science and Humanities, Germany
2012	External expert for promotion to Associate Professor, Lund University
2012	Promotion panel, Norwegian University of Science & Technology, Norway
2011	National Science Foundation (Polar Programs), U.S.A.
2011	External expert for hire of Structural Geologist, Uppsala University
2010	National Science Foundation (Tectonics), U.S.A.
2010	Promotion panel, Norwegian University of Science & Technology, Norway
2009 - 2012	Scientific Advisory Group, International Continental Drilling Program
2007	Australian Antarctic Science Program, Australia
2006	National Science Foundation (Tectonics), U.S.A.
2005 - 2011	Swedish Research Council, Committee for Infrastructure (large expenditures)
2005	Australian Antarctic Science Program, Australia

Editorial responsibilities

2013 – present	Editorial Board, International Geology Review
2013 – present	Editorial Board, Geological Magazine
2013 – present	Editorial Board, International Journal Earth Sciences
2009 – present	Editorial Board, Geological Society (London)
2007 – present	Editorial Board, GFF
2013	Guest editor, Precambrian Research
2007	Guest editor, Geological Society of America
2004	Guest editor, Geological Society (London)

Also reviewer for Journal of African Earth Sciences, American Geophysical Society Monograph Series, American Journal of Science, Canadian Journal of Earth Sciences, Geological Magazine, GFF, International Journal of Earth Sciences, Journal of African Earth Science, Journal of the Geological Society (London), Journal of South American Earth Sciences, Lithos, Physics and Chemistry of the Earth, Precambrian Research, Tectonophysics, NSF, FRI, + many other thematic special publications.

Laboratory management

2009 – present	PetroTectonics LA-ICPMS laboratory
2007 – present	PetroTectonics XRF laboratory
2003 – present	PetroTectonics geochemical laboratory
2006 – 2009	PetroTectonics petrographic laboratory
1982 -1989	Paleomagnetic laboratory, US Geological Survey, USA

Technical supervision

2012 – present	LA-ICPMS technician (C. Wohlgemuth-Uberwasser)
2007 – present	XRF & Geochemistry technician (R. Jacobsson)
2006 – 2008	Petrographic technician (P. Bergman)
2006 – 2007	Geochemical technician (J. Mansfeld)
2003 – 2005	Geochemical technician (B. Boström)

Budgeting responsibilities

LA-ICPMS laboratory (funding, equipment purchase, operational and repair costs)
XRF laboratory (funding, equipment purchase, operational and repair costs)
Geochemical laboratory (funding, operational costs, repairs costs)
Individual research grants awards and international group (25+ scientists) grant awards

International symposia/conference organization

2015	American Association of Petroleum Geologists, 3P, Norway (Organizing Committee)
2015	International Conference on Arctic Margins, Norway (Organizing committee)
2014	Circum-Arctic Lithosphere Evolution Annual Workshop, Vancouver, Canada
2014	Geological Society of America Session, Canada (Circum-Arctic Lithosphere Evolution)
2014	Nordic Winter Meeting Session, Sweden (Structure and Tectonics)
2013	American Geophysical Union Session, U.S.A. (Circum-Arctic Lithosphere Evolution)
2012	International Workshop, Saudi Arabia (Trans-Red Sea Correlation)
2012	Circum-Arctic Lithosphere Evolution Annual Workshop, Vienna, AU
2012	Circum-Arctic Lithosphere Evolution Group Workshop, Stockholm, SE
2011	Circum-Arctic Lithosphere Evolution Annual Workshop, Fairbanks, AK, USA
2011	International Workshop, Jordan (Trans-Red Sea Correlation)
2010	International Workshop, Egypt (Trans-Red Sea Correlation)
2009	International Workshop, Saudi Arabia (Trans-Red Sea Correlation)
2009	International Penrose Conference, Canada (Arctic Tectonics)
2008	International Workshop, Egypt (Trans-Red Sea Correlation)
2007	American Geophysical Union Session, U.S.A. (Arctic Tectonics)
2006	International Workshop, Egypt (Trans-Red Sea Correlation)
2005	International Workshop, Sweden (Assembly and break-up of Rodinia)
2003	International Conference on Arctic Margins, Canada (Arctic Magmatism)
2003	Nordic Winter Meeting, Sweden (Advances in Arctic Geoscience)
2001	European Union of Geosciences, France (Arctic Tectonics and Sedimentation)

International expeditions

2015	Brooks Range (Alaska), expedition leader ; organized by U of West Virginia, USA
2013	DeLong Islands (Arctic Russia), expedition leader , organized by SPRS, SE
2013	Brooks Range (Alaska), invited participant; organized by Stanford University, USA
2012	Taimyr Peninsula (Arctic Russia), expedition leader , organized by SPRS, SE
2010	Taimyr Peninsula (Arctic Russia), expedition leader , organized by SPRS, SE
2009	Ellesmere Island (Arctic Canada), invited participant; organized by CASP, UK
2007	Axel Heiberg Island (Arctic Canada), invited participant; organized by CASP, UK
2006	Wrangel Island (Arctic Russia), invited participant, organized by RAS, RU
2006	N Greenland, invited participant, organized by GEUS, DK
2005	Chukotka (Arctic Russia), expedition leader , organized by SPRS, SE
2004	Novaya Zemlya (Arctic Russia), invited participant, organized by UU, SE
2004	Svalbard, invited participant, organized by UNIS, NO
2003	Svalbard, expedition leader , self-organized
2002	Taimyr Peninsula (Arctic Russia), expedition leader , organized by SPRS, SE
1999	Taimyr Peninsula (Arctic Russia), expedition leader , organized by SPRS, SE
1998	Taimyr Peninsula (Arctic Russia), invited participant, organized by SPRS, SE
1997	Polar Urals (Russia), invited participant, organized by UU, SE

Research policy assignments:

2012– <i>present</i>	International Arctic Science Committee, Geoscience Advisory Group
2004 - <i>present</i>	Swedish Research Council, International Lithosphere Program National Committee Chairperson
2003 - 2013	Stockholm University Liason, Collaborative Research with Moscow State University (Russia)
2012	German Council of Science & Humanities, ESFRI Assessment exercise
2010	Institution of Earth & Environmental Sciences appointment board
2006 - 2012	Swedish Natural History Museum, Laboratory for Isotope Geochemistry Advisory Committee
2005 - 2011	Swedish Research Council, Research Infrastructure Committee
2005 - 2007	Swedish Research Council, International Geoscience Program Committee
2005 -2007	Bologna Working Group, Departmental adaptation of EU-education scheme
2001	Faculty Working Group for 'Research Theory' course. Developed and now required for all natural science undergraduate students.
2001	Institution of Earth & Environmental Sciences appointment board

Research & equipment grants (Table 1)

Some productivity metrics (Table 2)

Teaching activities (Table 3)

Student supervision (Table 4)

Table 1. Record of funding (2004-2015)

<i>Granting agency</i>	<i>PI(s)</i>	<i>Project</i>	<i>Year(s)</i>	<i>Total, SEK (UK£)*</i>
Swedish Research Council (VR)	Pease	Eurasian orogens in Alaska	2015-18	3 200 000 (320 000)
Crafoord Foundation	Pease	Brooks Range Orogenesis	2013	45 000 (4 500)
Chevron	Pease	CALE Science Network	2012-15	1 000 000 (100 000)
StatOil	Pease	CALE Science Network	2011-15	1 000 000 (100 000)
British Petroleum	Pease	CALE Science Network	2011-15	1 000 000 (100 000)
ExxonMobil	Pease	CALE Science Network	2011-13	750 000 (75 000)
International Arctic Science Committee	Pease	CALE Science Network	2011-15	250 000 (25 000)
International Lithosphere Program Evolution	Pease	Circum-Arctic Lithosphere	2011-15	250 000 (25 000)
Department Geological Sciences	Pease	Excimer Laser (913)	2011	1 400 000 (140 000)
		Post-doctoral researcher	2010	1 000 000 (100 000)
Swedish Research Council (VR)	Whitehouse & Pease	Magmatic evolution of the Arabian Shield	2010-12	2 400 000 (240 000)
Stockholm University	Pease	LA-ICP Post-doc. Faculty bonus	2009-10	1 000 000 (100 000)
Geological Society of America (GSA)	Lawver & Pease	Penrose Conference on Tectonic development of the Amerasia Basin	2009	600 000 (60 000)
K. & A. Wallenberg Foundation	Pease & Whitehouse	Research Infrastructure: Laser microanalysis (Quadrupole ICP)	2008	1 400 000 (140 000)
Swedish Research Council (SIDA-MENA)	Pease & Kaseem	JEBEL, Jordanian and Egyptian basement evolution	2008-10	600 000 (60 000)
Swedish Research Council (VR)	Pease	Circum-Arctic tectonic evolution & orogeny (renewal)	2008-10	810 000 (81 000)
Swedish Research Council (SIDA-MENA)	Pease	Neoproterozoic terranes of eastern Egypt – planning grant	2007	75 000 (7 500)
Swedish Research Council (KFI)	Pease & others	Geoscience Centre for Microanalysis and Microimaging -Infrastructure planning grant	2007	330 000 (33 000)
K. & A. Wallenberg Foundation	Pease & Skelton	PetroTectonics Centre Equipment Grant (XRF, automated thin-section apparatus)	2006	2 999 000 (299 900)
Stockholm University	Pease	Rådforskare Faculty bonus	2005	300 000 (30 000)
Swedish Research Council (VR)	Pease	Circum-Arctic tectonic evolution & orogeny	2005-07	1 399 000 (139 900)
Swedish Research Council (VR)	Pease	Senior Researcher in Continental Lithosphere Evolution & Mountain Chain Dynamics (tenured)	2004-10	5 410 800 (541 080)
Swedish Unesco	Pease	IGCP 440- Rodinia Internationa Scientific Workshop	2004	30 000 (3 000)
Carl Tryggers	Pease	Lithosphere dynamics	2002	70 000 (7000)

*UK£ approximate; historical exchange rate varies between 7 and 10:1.

Table 2. Productivity metrics (as of October 2015)

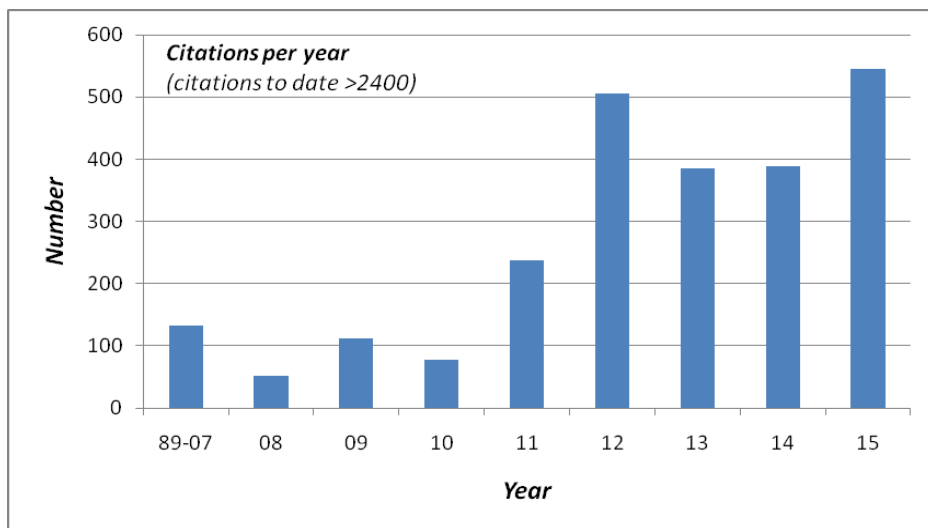
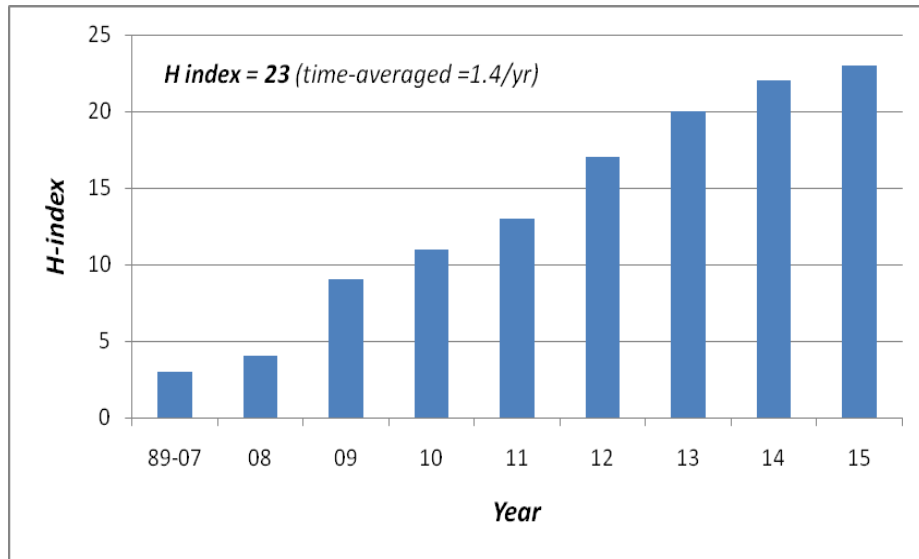


Table 3. Teaching activity (at SU unless stated otherwise; hp = course credits; 30 hp in one semester).

<i>Term/year</i>	<i>Course</i>	<i>Level</i>	<i>Responsibility</i>
Spring/15	Petrogenesis & Tectonics, 10hp	I	C, E, F
Spring/15	Igneous Petrology, 5hp	B	L, E
Spring/15	Petrogenesis by distance, 1.5hp	I	S
Spring/14	Petrogenesis & Tectonics, 10hp	I	C, E, F
Spring/14	Igneous Petrology, 5hp	B	L, E
Fall/14	Geodynamics, 7.5hp	A	C, L, E
Spring/13	Petrogenesis & Tectonics, 10hp	I	C, E, F
Spring/13	Igneous Petrology, 5hp	B	L, E
Fall/12	Geodynamics, 7.5hp	A	C, L, E
Spring/12	Petrogenesis & Tectonics, 10hp	I	C, E, F
Spring/11	Petrogenesis & Tectonics, 10hp	I	C, L, E, S, F
Spring/10	Structural Geology, 7.5hp	I	C, L, E, S, F
Fall/10	PetroTectonics, 7.5hp	A	C, L, E
Spring/10	Petrogenesis & Tectonics, 10hp	I	C, L, E, S, F
Spring/09	Petrogenesis & Tectonics, 10hp	I	C, L, E, S, F
Fall/08	PetroTectonics, 7.5hp	A	C, L, E
Spring/08	Structural Geology, 7.5hp	I	C, L, E, S, F
Fall/05	Geochemical modelling, 3hp	A	C, E, S
Fall/03	Critical thinking in science, 7.5hp	A	C, L, E, S
Spring/07	Advanced Igneous petrology, 7.5hp	I	C, L, E, S, F
Spring/06	Advanced Igneous petrology, 7.5hp	I	C, L, E
Fall/05	Advanced Igneous petrology, 7.5hp	I	C, L, E, S, F
Spring/04	Structural Geology, 7.5hp	I	C, L, E, S, F
Spring/04	Advanced Igneous petrology, 7.5hp	I	C, L, E, S, F
Spring/03	Structural Geology, 7.5hp	I	C, L, E, S, F
Spring/02	Advanced Igneous petrology, 7.5hp	I	C, L, E, S, F
Spring/01	Tectonics and sedimentation, 7.5hp	A	C, L, E, S, F
<i>Invited undergraduate lectures</i>			
Fall/15	Microanalysis, LAICPMS	I	L
Fall/14	Microanalysis, LAICPMS	I	L
Fall/12	XRF Analytical Methods	I	L
Fall/11	XRF Analytical Methods	I	L
Spring/10	Fission Track Geochronology	I	L
Fall/09	XRF Analytical Methods	I	L
Fall/08	Caledonian Orogeny	B	L
Fall/08	XRF Analytical Methods	I	L
Fall/07	XRF Analytical Methods	I	L
Fall/07	Fission Track Geochronology	I	L
Fall/07	Fission Track Geochronology	I	L
Spring/03	Strike-slip regimes (Uppsala University)	A	L
Fall/01	Introduction to isotope geochemistry	I	L
Fall/01	Introduction to mantle geochemistry	I	L
Fall/01	Fission Track Geochronology	I	L
Spring/01	Preparation of SIMs mounts (NRM)	A	L

Level: A, Advanced (MSc/PhD); I, Intermediate (undergrad.); B, Beginning (undergrad.).

Responsibility: C, course organizer; L, main lecturer; E, drafted exercises/labs; S, provided supervision or grades/feedback; F, field component. 10hp courses involve co-teaching.

Contact hours: Stockholm University uses an 'intensive' teaching system in which a single course is taken, full-time for 5 weeks (7.5 hp). There are 4x5-week course periods per semester. Actual contact hours for a single course (7.5 hp) = 20 hours/week or 100 hours per course.

Table 4. Student supervision

<i>Date</i>	<i>Name, Subject</i>	<i>Degree</i>
<i>Principal supervisor</i>		
2011- 2015	Xiaojing Zhang, Circum-Arctic sediment correlation using provenance techniques	PhD
2010 - <i>present</i>	Fitsum Girun, Crustal evolution of the Arabian Shield over 2 billion years – a combined hafnium and oxygen isotope investigation	PhD
2004 - 2010	C.H. Petterson, Lithosphere dynamics and tectonic evolution of Northern Svalbard (parental leave)	PhD
2005 - 2010	N. Rantakokko, Geochemical evolution of allochthonous arc terranes, eastern Oman (parental leave)	Fil.Lic.*
2002 - 2006	M. Ringdahl Stein, Petrogenetic evolution of high potassic shoshonites, Stromboli (parental leave))	Fil.Lic.*
2011 - 2012	R. Nasiri, Petrogenesis of Wadi Dabr Igneous Complex, Egypt	MSc
2011 - 2013	H. Öste, Anticrystic olivine from the Calatrava Volcanic Province, Spain	MSc
2010 - 2012	Wen Zhang, Adakite-like granites of Beishan, NW China	MSc.
2009 - 2010	E. Axelsson, Granitoid genesis in the central eastern desert Egypt	MSc
2015	A. Söqvist, QEMSCAN analysis of samples from the DeLong Archipelago	BSc
2015	J. Olsson, U-Pb zircon dating of samples from the Thalbah Group, Saudi Arabia	BSc
2014	S. Clark, Melt genesis of Socotra high silica rhyolites	BSc
2013	J. Brotherton, Geological setting of rock samples from the DeLong Islands	BSc
2010	J. Nilson, Volcanic rocks of Socotra	BSc
2009	Å. Lundin, Norra Uppland gabbros	BSc
2008	E. Axelsson, Methodological comparison of rock classification: An example from the central eastern desert, Egypt	BSc
2004	M. Johansson, Volcanic rock geochemistry with microwave dissolution	BSc
2005	K. Eliaeson, Geochemical significance of volcanic rocks in the Eurasian Arctic	BSc
2004	S. Persson, Geodynamic setting of volcanic rocks in the Northern terrane of Taimyr, Russia, using samarium-neodymium isotope geochemistry”	BSc
2003	F. Holm, Petrology and geochemistry of Esjufjöll, southeast Iceland	BSc
<i>Co-supervision</i>		
2014- <i>present</i>	R. Kielman, The transition from Hadean to early Archean crust – A Zircon perspective	PhD
2014- <i>present</i>	F. Thiessen, “Assessment and reassessment of Impact history of the Moon and lunar materials using the U-Pb system	PhD
2010- <i>present</i>	Carl Hoiland, “Caledonian-age orogeny in the Southern Brooks Range, Alaska” Stanford University, USA (to be awarded)	PhD
2011-2012	W. Zhang, late Paleozoic Central Asia Orogenic Belt and North China craton	PhD
2006 - 2009	J. E. Omma, “Circum-Arctic Mesozoic basin evolution ” Cambridge University, UK	PhD
2000 - 2005	H. Lorenz, “Kara Sea Terranes, with emphasis on Severnaya Zemlya” Uppsala University, Sweden	PhD
2003	R. Eriksson, “The age of granitic intrusions of eastern Taimyr” Uppsala University, Sweden	BSc

Notes – Time off during studies due to ‘Parental leave’ where specified.

* The Fil. Lic. degree is awarded after successful completion of 1 manuscript within the PhD program. It is not equivalent to the MSc in Sweden.